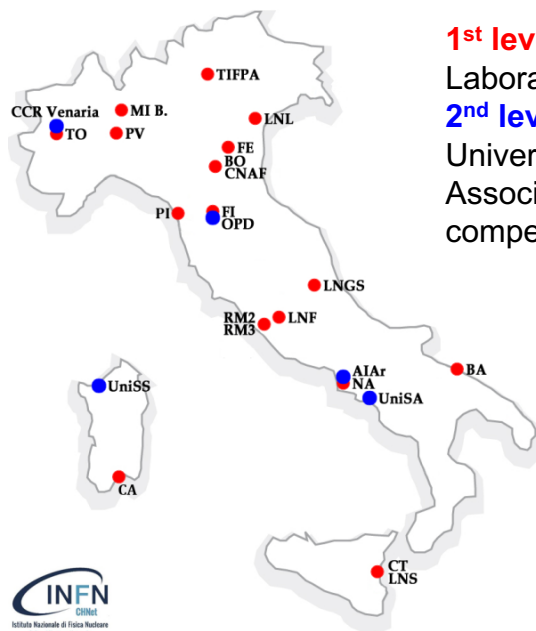


# CHNet cloud: an EOSC-based cloud for physical technologies applied to cultural heritages

**Alessandro Bombini**

INFN CHNet, FIRENZE

# The INFN Cultural Heritage Network



## 1<sup>st</sup> level nodes:

Laboratories in INFN facilities

## 2<sup>nd</sup> level nodes:

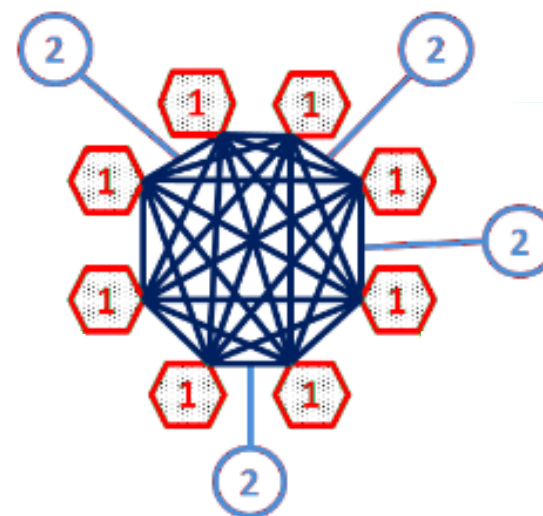
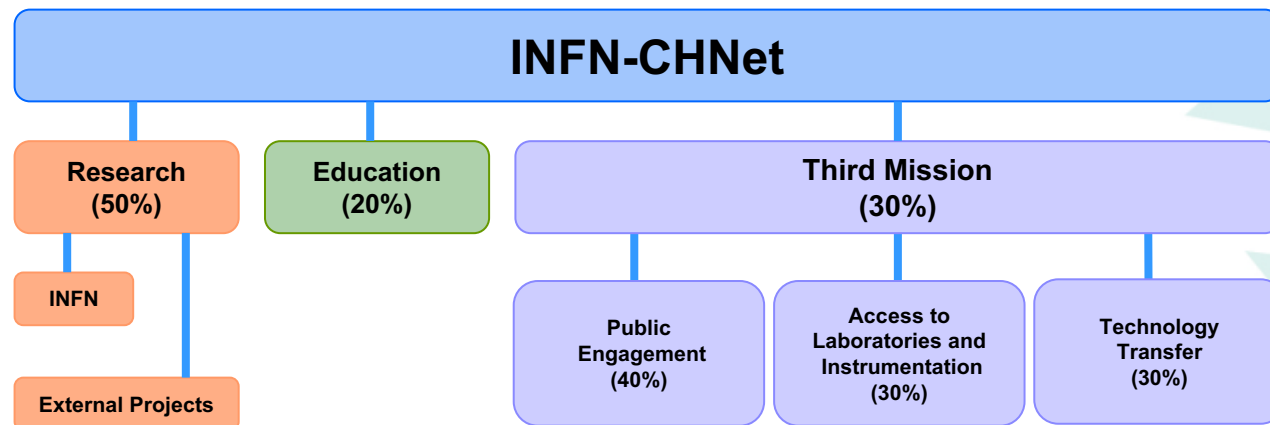
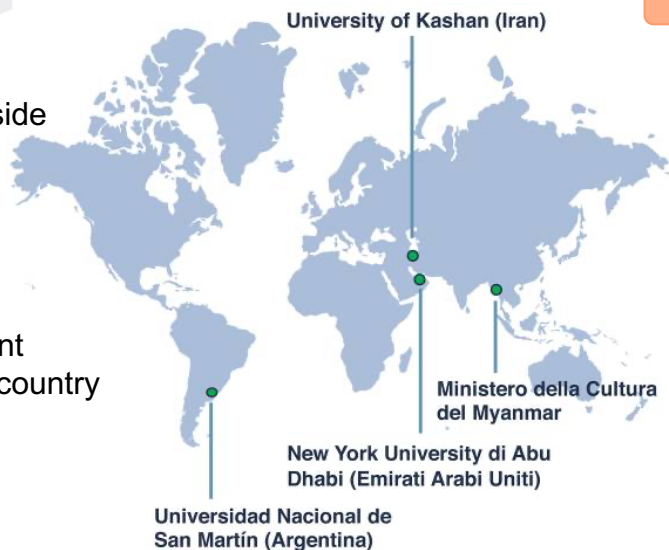
Universities, Restoration Centres, Associations, with complementary competencies

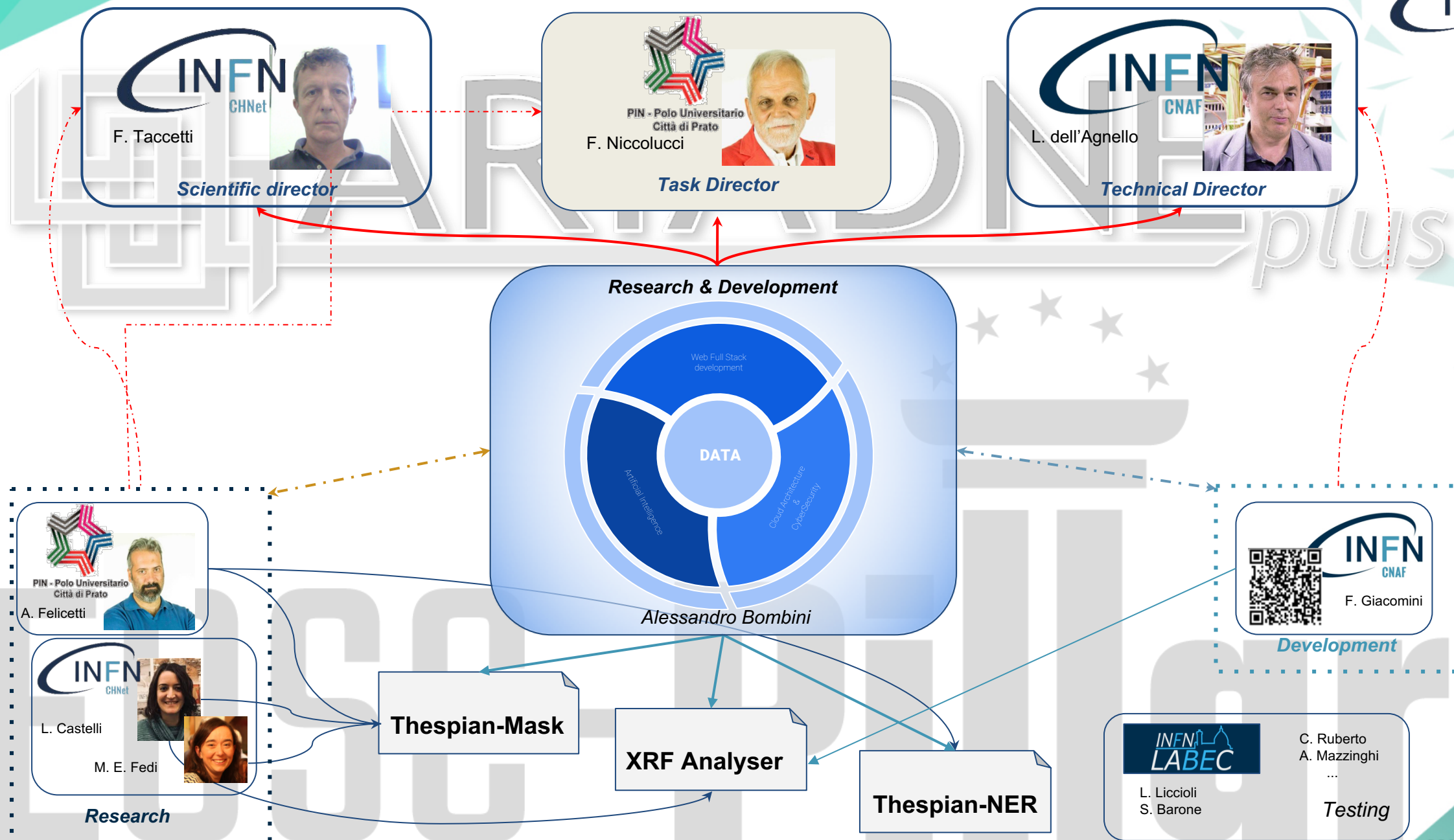


## 3<sup>rd</sup> level nodes:

Foreign research centres/Universities outside Europe.

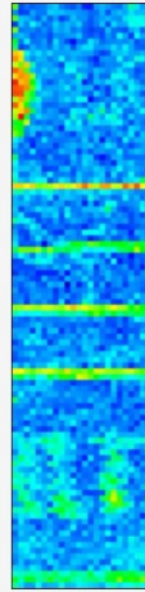
- Each 3<sup>rd</sup> level node is bound to a 1<sup>st</sup> level node
- Each 3<sup>rd</sup> level node is encouraged to create a local network with different competencies in its own country







## XRF I



Study object period

Accademia "La

Study object Locati

Location Label:

Location:

## THESPIAN-NER - Named Entity Recogniton tool for Archeology

### Collaborative semantic enrichment of text-based datasets - Italian language version

I primi scavi nell'area pompeiana si ebbero a partire dal 1748, per volere di **Carlo III** **PER** di Borbone a seguito del successo dei ritrovamenti di **Ercolano** **LOC** : i sondaggi furono svolti da **Roque Joaquín** **PER** de Alcubierre, che, credendo di essere sulle tracce dell'antica Stabiae, riportò alla luce nei pressi della collina di Civita diverse **monete** **ART** e oggetti d' **epoca romana** **PRD** , oltre a porzioni di costruzioni, prontamente ricoperte dopo l'esplorazione. Le esplorazioni furono ben presto abbandonate a causa degli scarsi ritrovamenti e ripresero soltanto **nel 1754;** **TSP** nel 1763, grazie al rinvenimento di un' **epigrafe** **ART** , che parlava chiaramente della Res Publica Pompeianorum, si intuì che si trattava dell'antica città di Pompei[11]. Con **Maria Carolina** **PER** , moglie di **Ferdinando IV** **PER** , e l'ingegnere **Francesco La** **PER** **Vega** **LOC** , parte della città, come la zona dei teatri, il **tempio di Iside** **ART** , il **Foro Triangolare** **LOC** , diverse case e **necropoli** **ART** vennero riportate completamente alla luce e non più seppellite, ma rimaste a vista; fu durante il dominio francese, con a capo **Gioacchino Murat** **PER** e la **moglie**

Use extractive text summarisation

Download as html

Download as .txt

#### Person

Number of Person found in the text: 12

#### Location

Number of Location found in the text: 9

**Porta Ercolano** (number of appearances in the text: 2)



**Ercolano** (number of appearances in the text: 1)



**Vega** (number of appearances in the text: 1)



**Foro Triangolare** (number of appearances in the text: 1)



**Pompei** (number of appearances in the text: 1)



**Europa** (number of appearances in the text: 1)



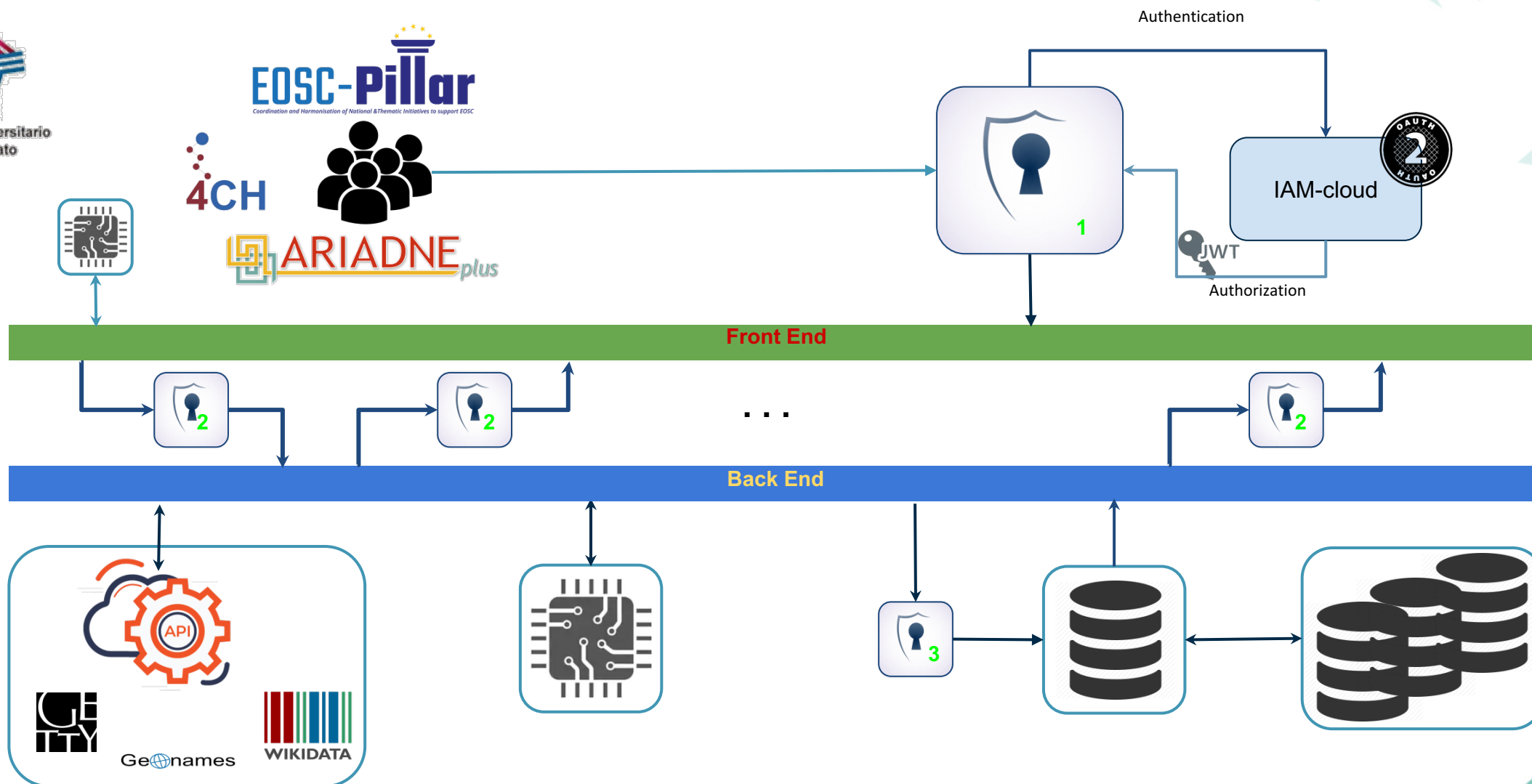
Number of selected entities: 2

Search database with selected entities - OR

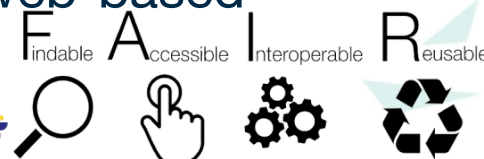
Search database with selected entities - AND



# The Cultural Heritage Network Cloud



- CHNet is the INFN network dedicated to the application of physical technologies on Cultural Heritages.
- It is currently developing, jointly with CNAF and PIN, a set of ontology-enabled web-based services for FAIR-based data storage & analysis, available in its cloud.
- It currently offers cloud services developed within 2 european projects, **EOSC-Pillar** and **ARIADNE<sub>plus</sub>**. In the near future, they will be integrated into the **4CH** competence center on Cultural Heritages.
- DHLab, the digital group of CHNet, is currently developing further (micro)services, but it is also involved in few research projects on Digital technologies applied to Scientific Analysis on Cultural Heritages.
- The goal is to move (almost) all CHNet software and data in the cloud.



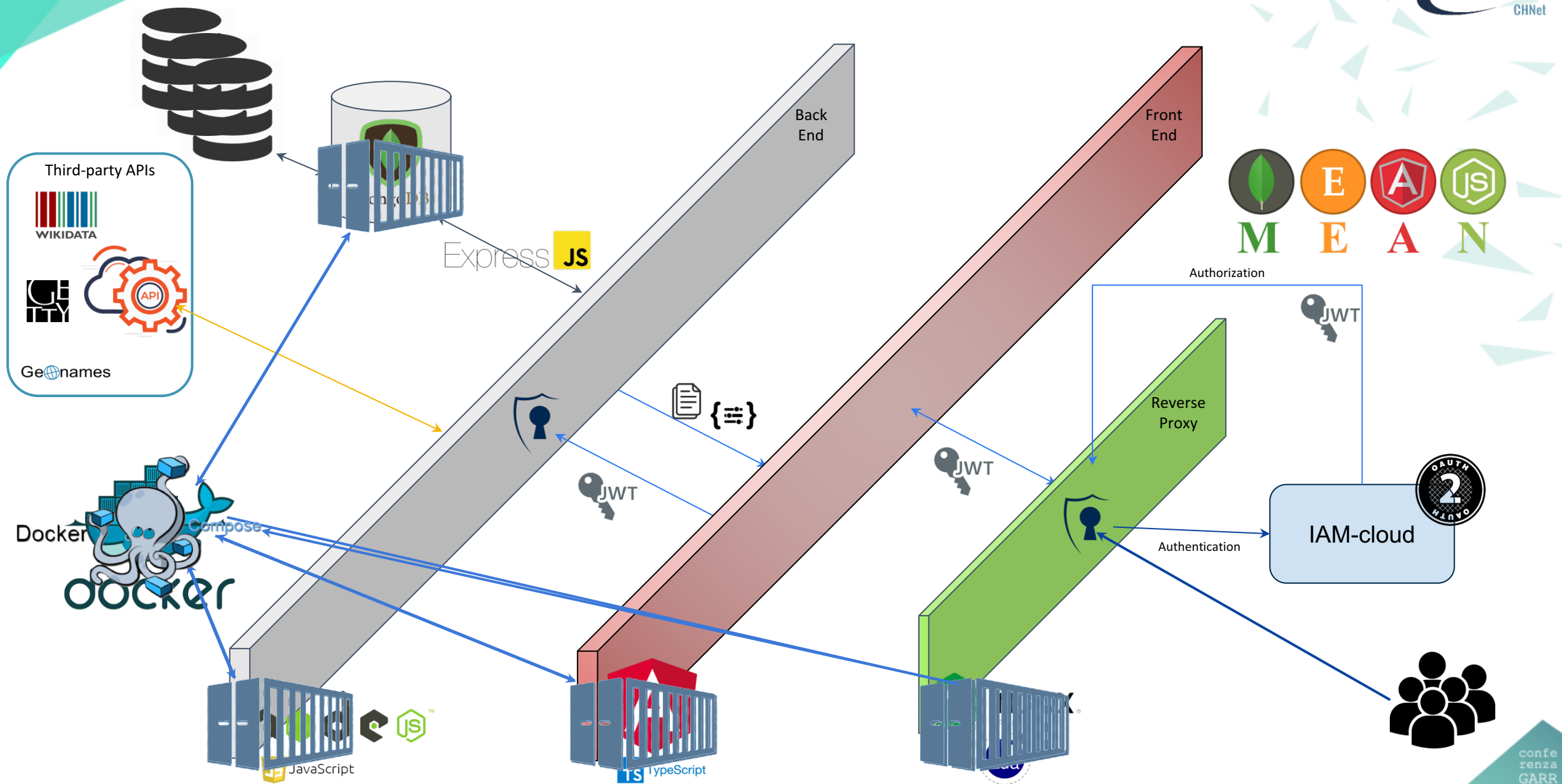
**Thank you for your attention!**

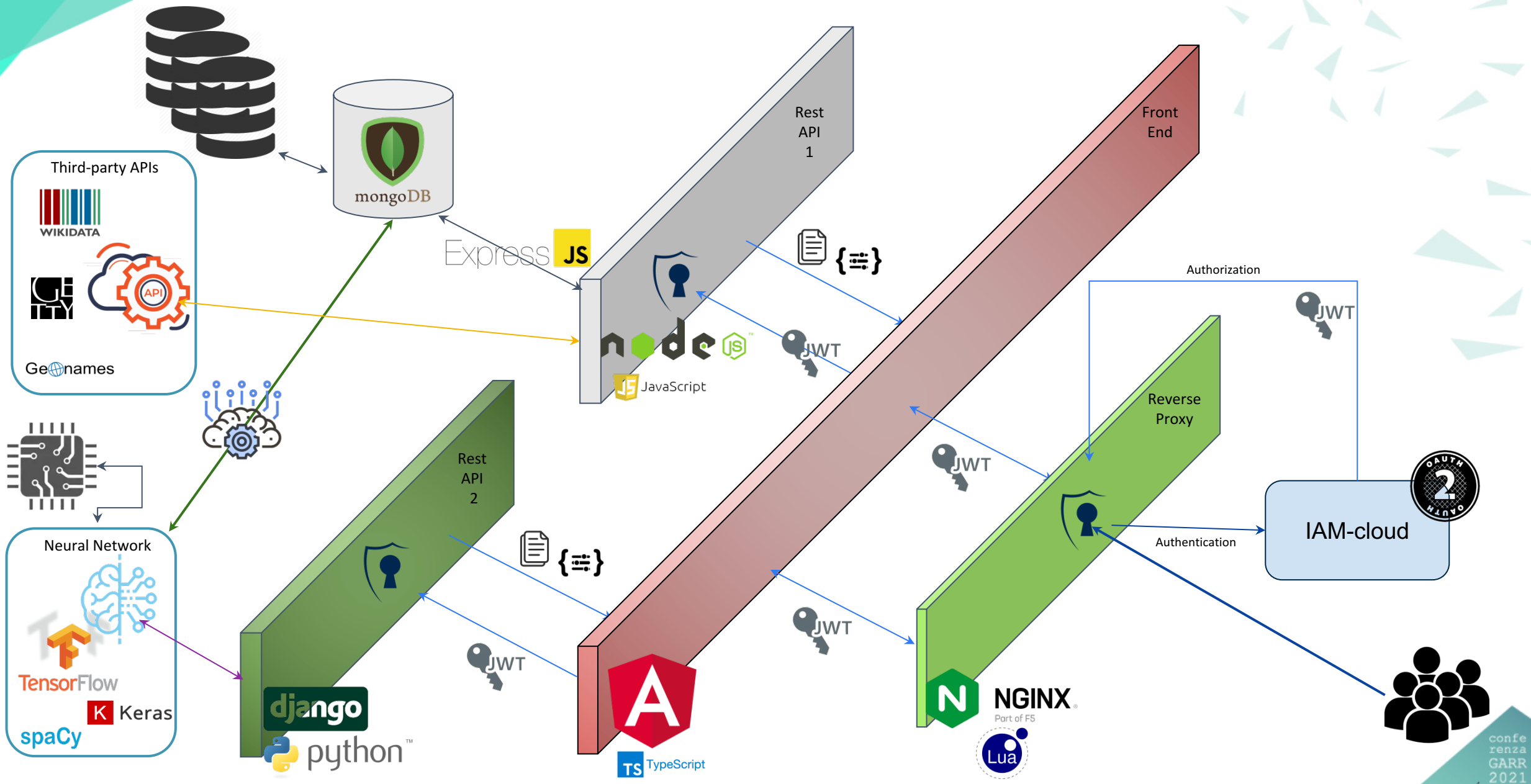
**Alessandro Bombini**  
INFN CHNet, FIRENZE

## Extra slides

**Alessandro Bombini**  
INFN CHNet, FIRENZE







# DHLab in EU Projects: EOSC-Pillar WP 6

## WP 6.5



### **FAIR principles in data life-cycles for Humanities**

This case will be a model for linking with other data repositories used in social science and humanities (SSH) communities. It will also liaise with CO-OPERAS GO-FAIR Implementation Network to ensure that SSH needs are correctly taken into account in order to facilitate the integration of SSH in EOSC.

**Lead: CNRS**

## Community-driven Pilots

## WP 6.9



### **Integrating heterogeneous data on cultural heritage**

The management of digital objects remains an area of interest that crosses disciplines, institutions and infrastructures. In this context, the need for building aggregations or collections of such objects has become an essential element. The goal of this use case is to port the TEXTCROWD-a service in EOSC for multiple languages and compare the performance with TEXTCROWD-b developed with a different approach.

**Lead: INFN**

TEXTCROWD → THESPIAN-NER